


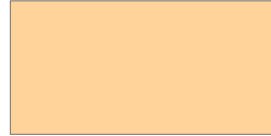
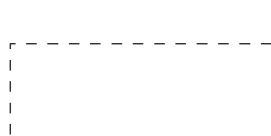
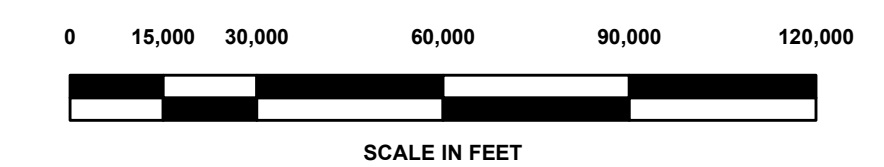
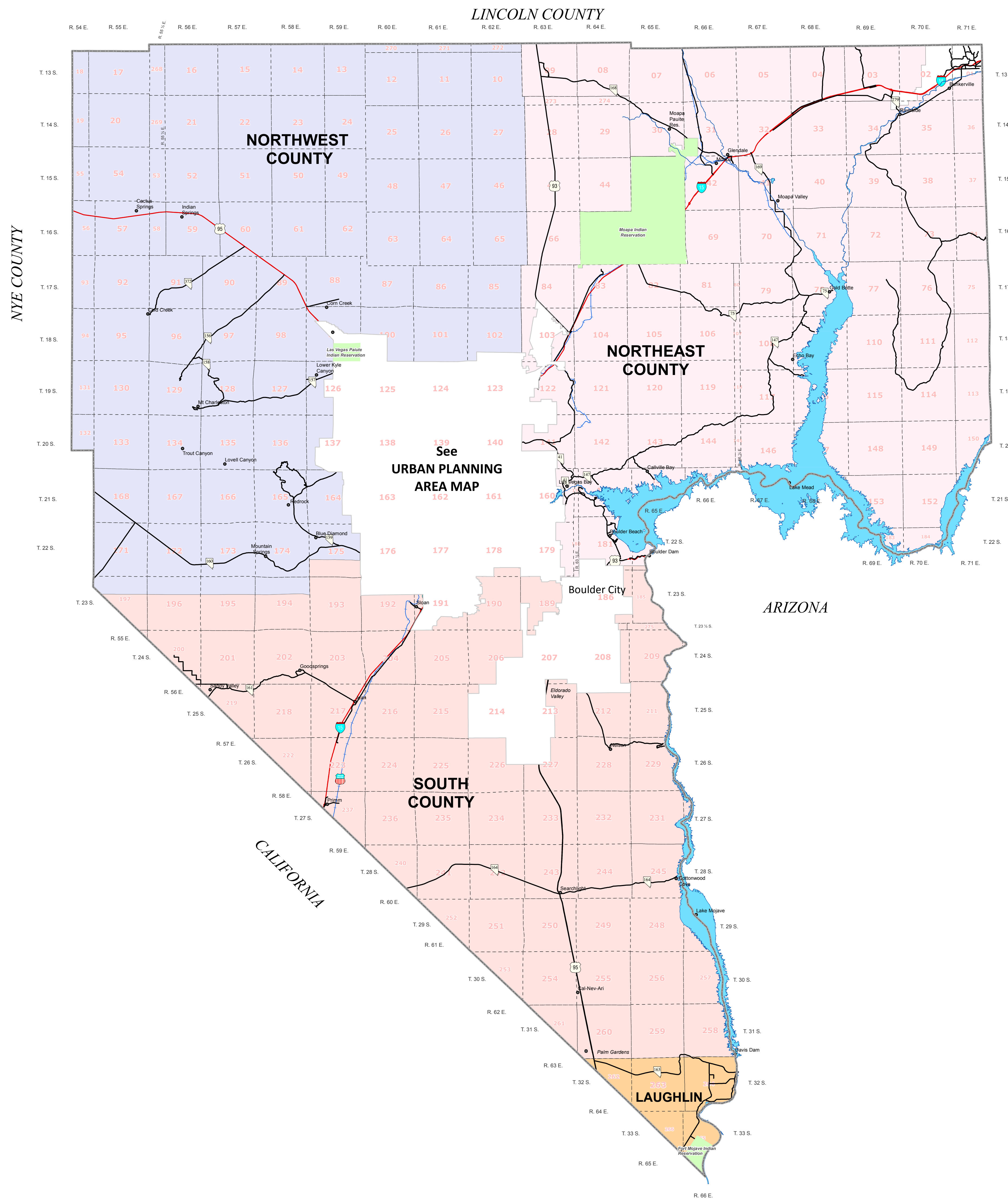


Comprehensive Planning

CLARK COUNTY NEVADA

Rural Planning Areas

-  Northwest County
-  Northeast County
-  South County
-  Laughlin
-  Township / Range (Book) Boundaries



Map created on: December 20, 2018

This information is for display purposes only.
No liability is assumed as to the accuracy of the data delineated hereon.

Source: Clark County Geographic Information Systems Central Repository.

